

# Climate MRV for Africa – Phase 2 Webinar: Enhance Institutional MRV System in Nigeria & MRV implementation in the Grid- Connected Electricity Sub-Sector

**NIRAS**

GreenStream



TÜVRheinland®  
Precisely Right.



camco  
clean energy



## Project of the European Commission DG Clima Action

EuropeAid/136245/DH/SER/MULTI

Mike Bess, EU MRV Team &  
Dr Chikwerem Obi, Nigeria Electricity  
Regulatory Commission (NERC)  
January 2018

# Nigeria's UNFCCC Reporting Agenda

## Nigeria's UNFCCC Reporting Schedule post-Paris

➤ Nigeria needs to submit its **first Biennial Update Report (BUR)** soon; then, every two years thereafter

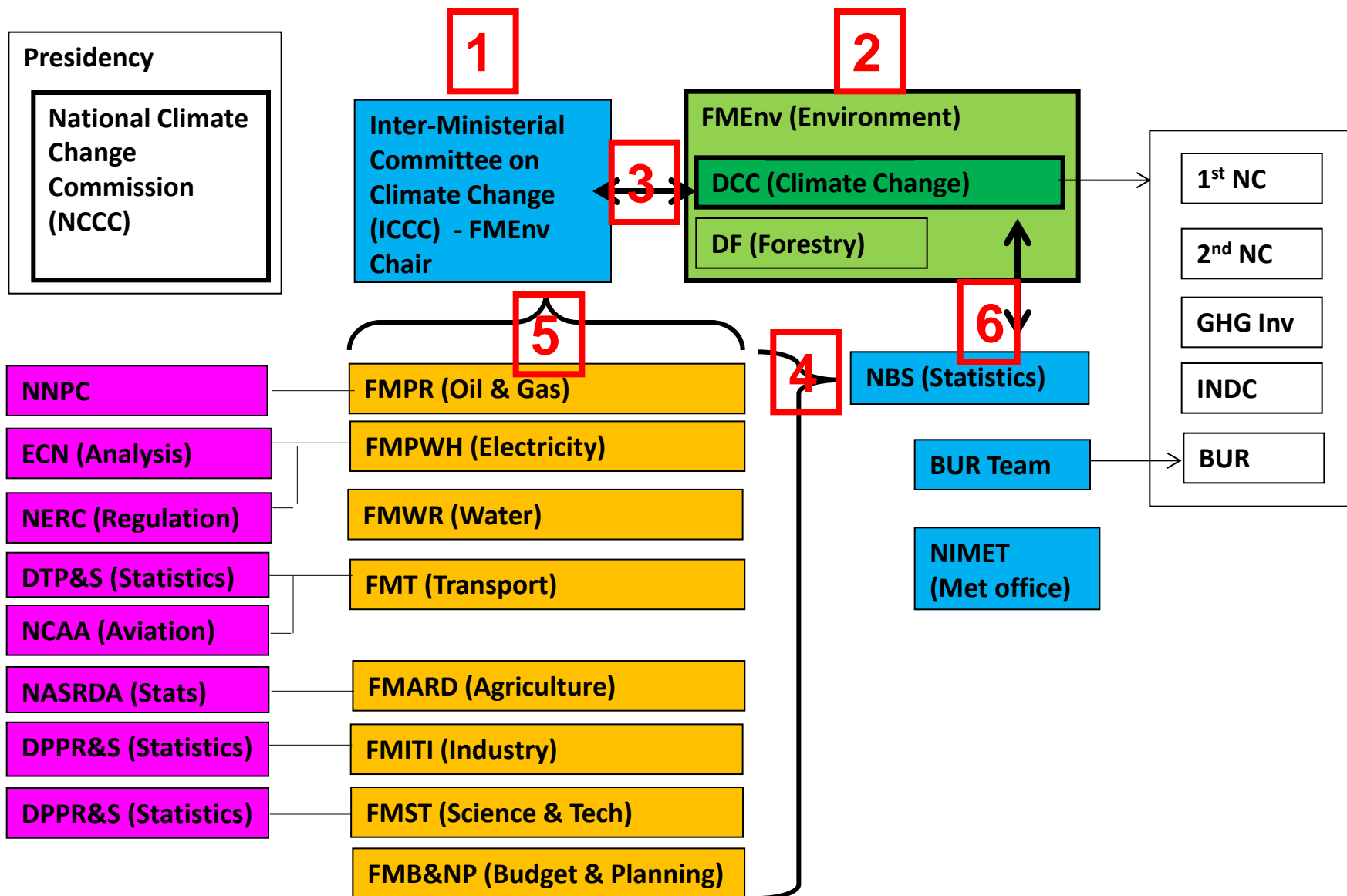
➤ **TNC (Third National Communication)** due 2018  
(FNC due in 2022)

➤ **Nationally Determined Contributions (NDC)** next due 2020

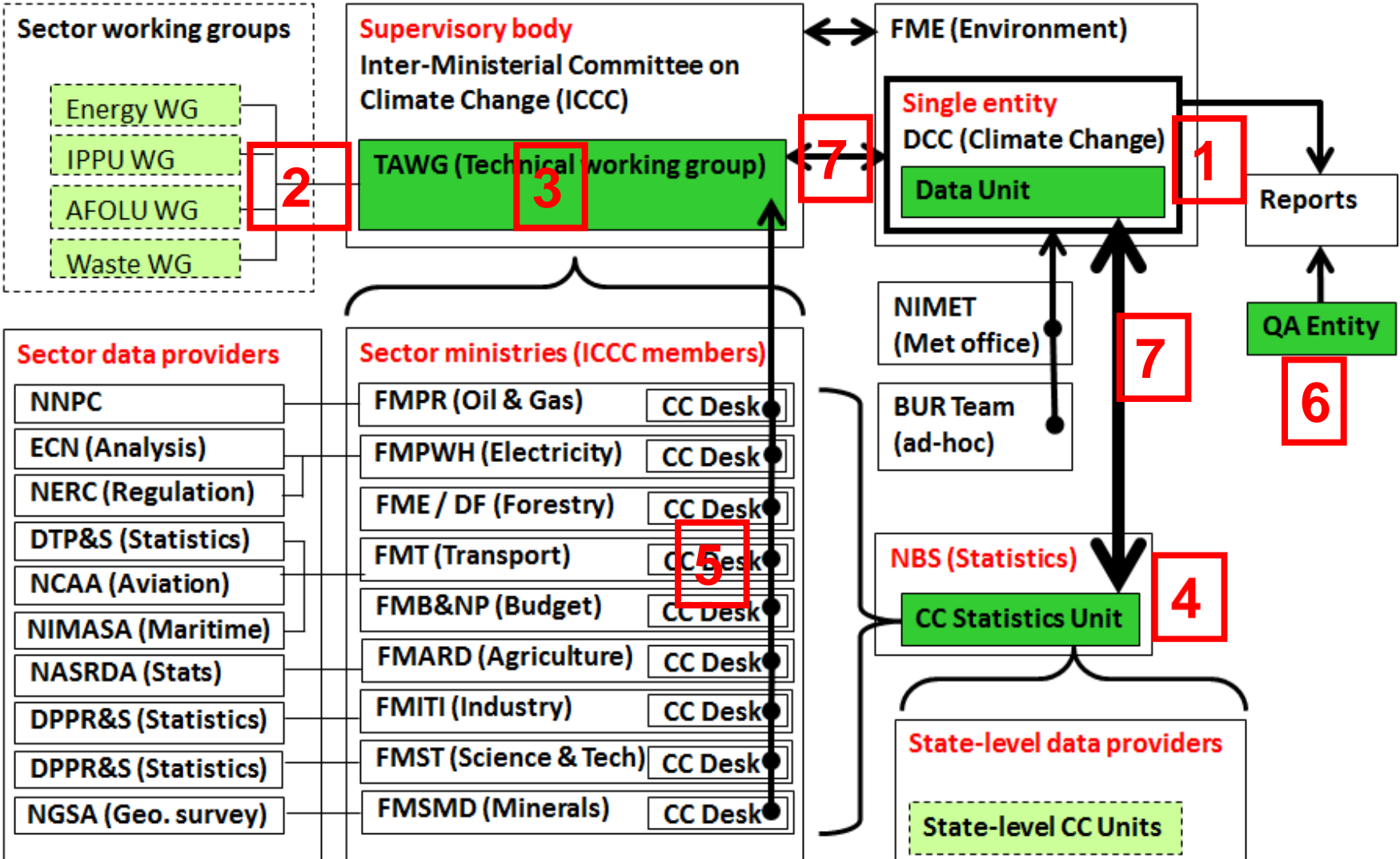


Submission \ Year	2018	2019	2020	2021	2022	2022
Biennial Update Report - BUR	X		X		X	
National Communication (NC)		X				X
Nationally Determined Contributions (NDC)			X			

# Nigeria's Current Climate MRV System



# Proposed Enhanced National Institutional Set-Up



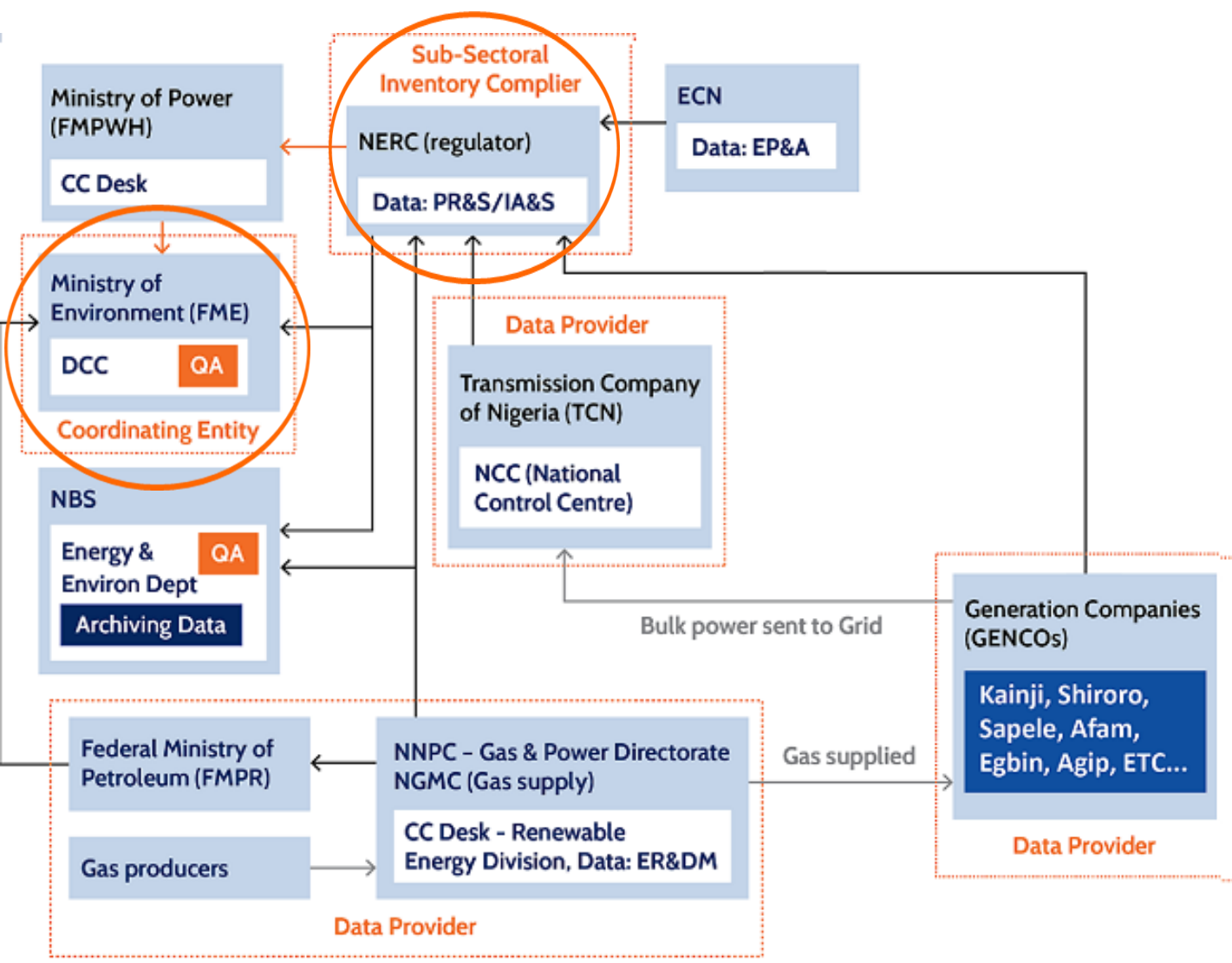
# Summary Recommendations – Phase 1 (2017-2019)

1. **Elevate DCC** and increase capacity of **DCC** team
2. **Inter-Ministerial Climate Change Committee (ICCC)** should remain Nigeria's top Climate Change Supervisory body & expand its technical capabilities
3. Create a **permanent GHG Technical Working Group (TAWG)** within the ICCC
4. **NBS (National Bureau of Statistics)** should have a dedicated Climate Change (CC) team, within existing Environmental Statistics Unit
5. **MDA (Ministries, Departments & Agencies) Climate Officers'** roles should expand to cover GHG inventory data collection
6. Independent, dedicated **QA entity** needs to be established
7. **Data flows to & from DCC to NBS & MDAs** & between them should be improved & strengthened

# Key Actions in Developing Nigeria's Grid-Connected Electricity Sub-Sector (GCESS) MRV

- **Identify all key GCESS stakeholders** & gaining their participation through stakeholder meetings
- **Map the GCESS institutional set-up** (MRV System) & the flow of information & data in the sub-sector
- **Establish GCESS Working Group** comprised of key stakeholders in the sub-sector
- Prepare **sub-sector MRV data templates** for reporting
- **Test the templates** with stakeholders & updating
- Establish & delegate responsibilities for **QA/QC Plan**

# GCESS MRV System – Agreed upon & Established by DCC & Stakeholders



## Institution Key

IA&S = Industry, Analysis and Strategy Unit

FMPWH = Federal Ministry of Power Works and Housing  
 CC Desk = Climate Change Desk

FME = Federal Ministry of Environment  
 DCC = Department of Climate Change

NBS = National Bureau of Statistics  
 Energy & Environ Dept = Department for Energy and Environmental Statistics

NNPC = Nigerian National Petroleum Company  
 DPR = Department of Petroleum Resources  
 ER&DM = Economic Research and Data Management  
 CC Desk = Climate Change Desk  
 NGMC = Nigeria Gas Marketing Company

NCC = National Control Centre

ECN = Energy Commission of Nigeria

NERC = Nigerian Electricity Regulatory Commission  
 PR&S = Policy Research and Statistics Division

# Lessons from GCESS MRV Implementation

## Replication in other Sectors

- The **MDAs (Ministries, Departments & Agencies) Climate Desk Officers**, who liaise with the DCC on a regular basis, are the entry point to access key data, and are essential for mobilizing other stakeholders in day-to-day focal areas.
- **Climate Desk Officers are keen to participate**, but require training & support on GHG reporting requirements.
- This sub-sector exercise shows the **need to map the sector out** first in detail, and identify not only key stakeholders, but also stakeholders, who have **the necessary data and information**.
- Forming a strong, active, representative **working group** is very important and is good lesson for doing national inventory work for NC, BUR, etc., also for MRV.



# Thank you!

[www.mrvafrika.com](http://www.mrvafrika.com)